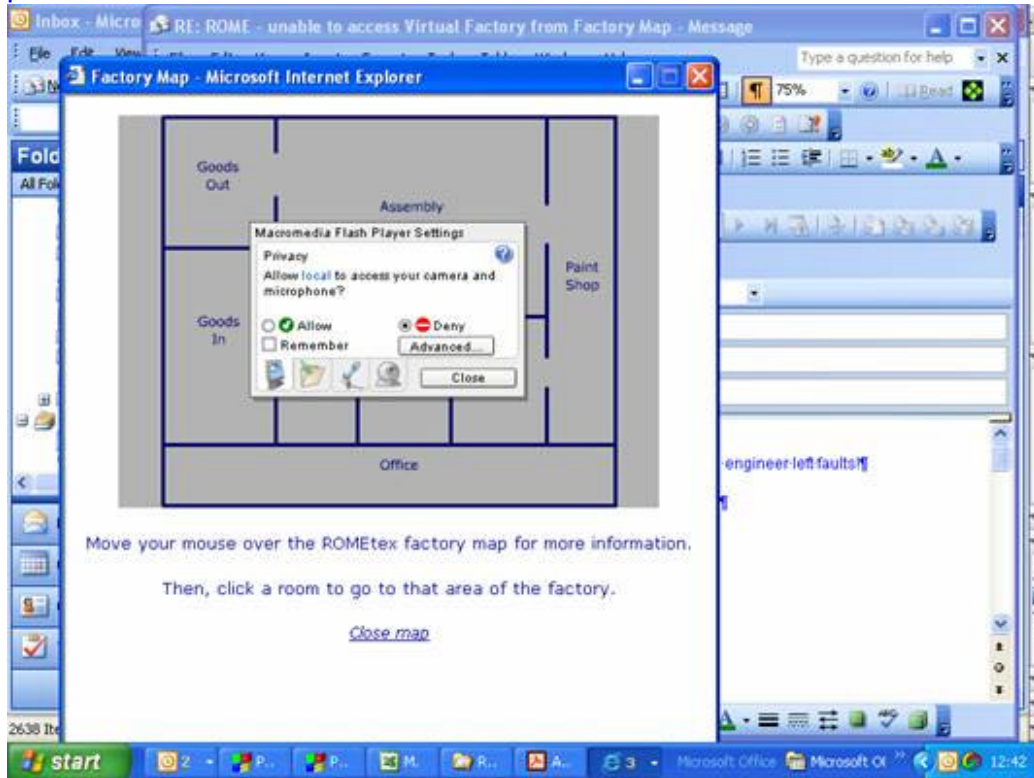


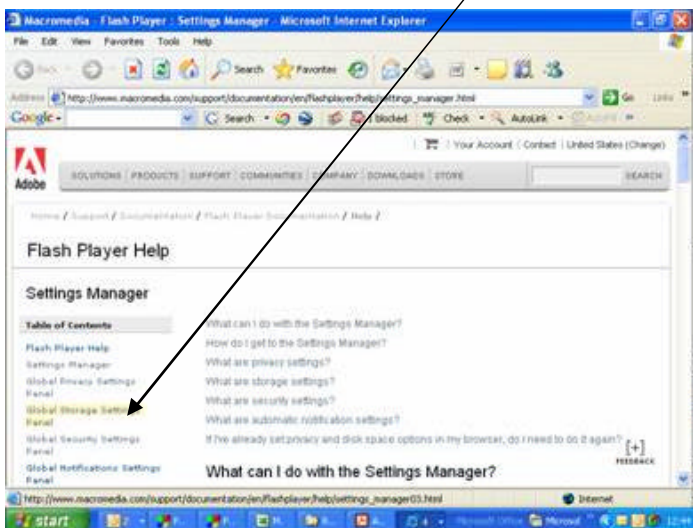
Unable to access Virtual Factory from Factory Map

I think what is happening is that the settings on your PC/Laptop need altering.
When you have loaded up the factory map right mouse click on a workshop and you will get this popup.

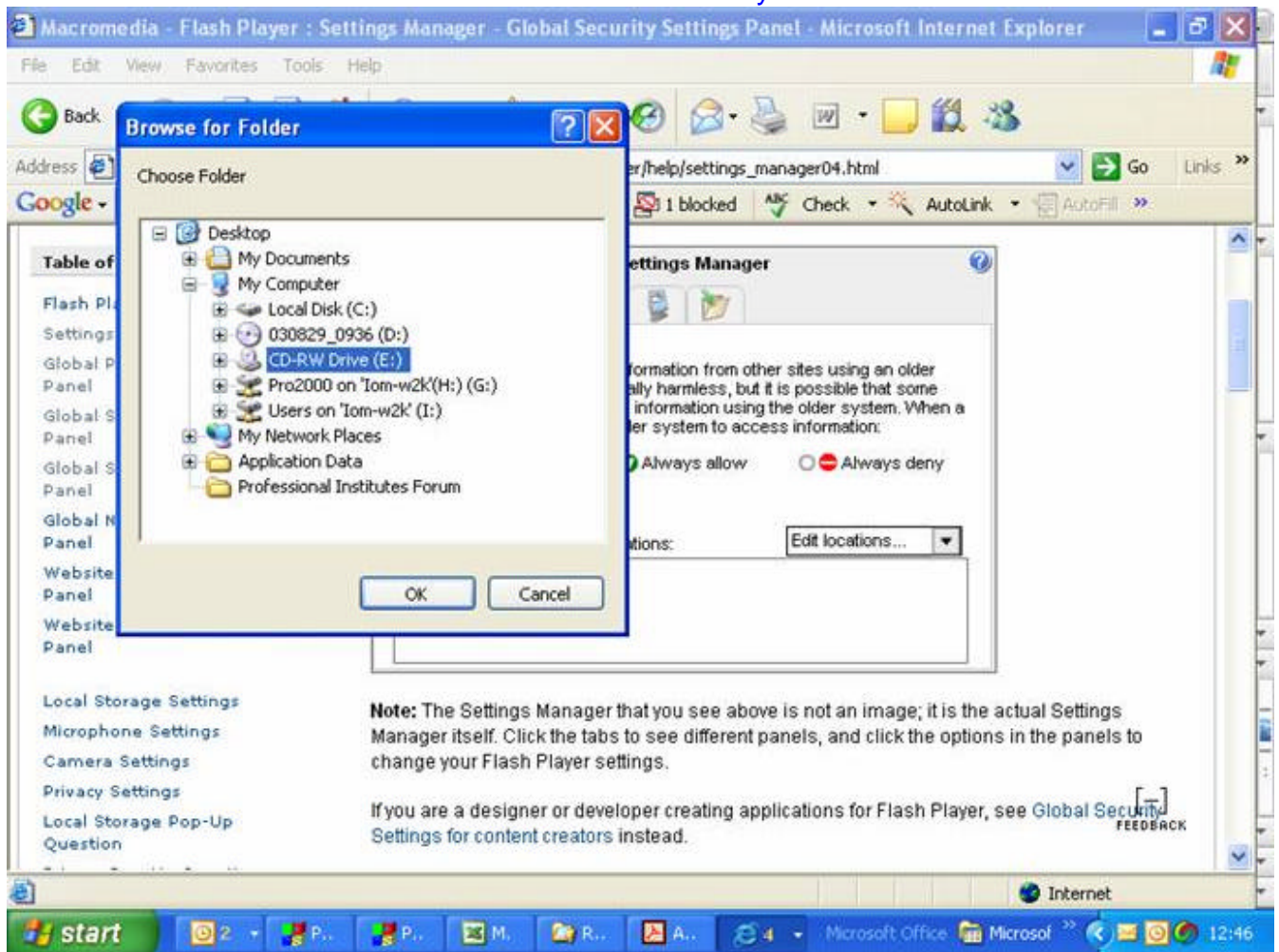


If you click on Advanced it will go to the macromedia website and you can alter your settings there.

Click on Global Security Settings:



Now click on Edit locations> Browse for folder and select your CDROM drive.



Click OK and then check the “Always allow” radio button and close down the web page.

Good luck. If you still have difficulty, do not hesitate to contact me.